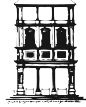




Ministero  
dei beni e delle  
attività culturali  
e del turismo



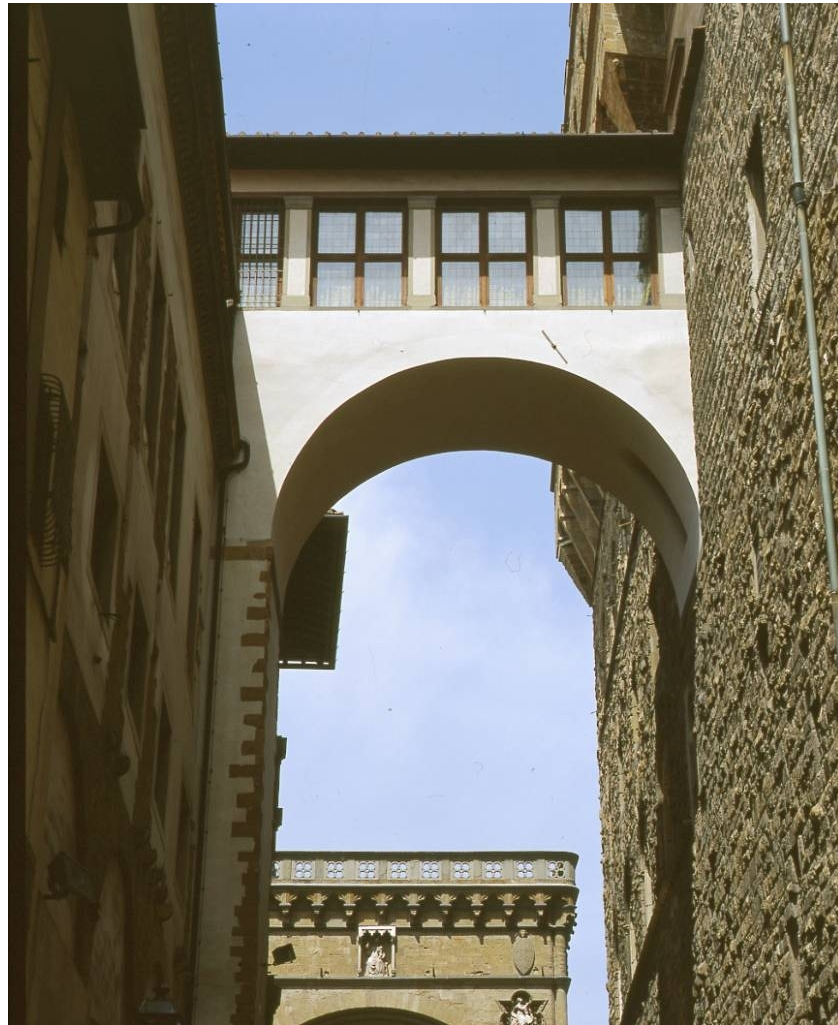
GALLERIE DEGLI UFFIZI

**From 5 July 2017 to 14 January 2018**

**"FROM PALAZZO VECCHIO TO THE UFFIZI"**

**Combined ticket**

**groups of no more than 25 visitors - reservations are required**



A new tour designed and promoted by the Comune di Firenze and the Ministero dei Beni e delle Attività Culturali e del Turismo in conjunction with Firenze Musei allows visitors to cross directly from the Museo di Palazzo Vecchio to the Galleria delle Statue e delle Pitture degli Uffizi over the spectacular footbridge linking the two buildings high above Via della Ninna.

The footbridge is, in effect, the first stretch of the celebrated Vasari Corridor that joins Palazzo Vecchio to Palazzo Pitti via the interior of the Uffizi and crosses the Arno on the Ponte Vecchio. Commissioned by Cosimo I de' Medici in 1565 to mark the marriage of his son Francesco to Joanna of Austria, the corridor owes its name to Giorgio Vasari, the Duke's "in-house" architect who built it in a mere five to eight months, an exceptionally short space of time. Designed exclusively for private use, it allowed the members of the Medici court to move conveniently discreetly and in total safety from one of palace to the other.

A superb product of Vasari's fertile mind and of his skill in engineering, the lofty covered footbridge that crosses the former Via della Dogana, now Via della Ninna, in a single span, served to link the two poles of ducal power. The 14<sup>th</sup> century Palazzo Vecchio was the old seat of the city's republican government. Duke Cosimo I de' Medici chose it as his principal residence in an effort to underscore his sovereignty over Florence and caused it to be extended and transformed into a sumptuous palace worthy of a prince, calling on numerous famous artists for the purpose. Even after the court moved into its new residence, Palazzo Pitti, the old building continued to maintain its eminently political and state function. Most of the frescoes, painted wooden ceilings, pictures and sculptures adorning the rooms open to visitors in Palazzo Vecchio, now the seat of the Florentine municipal authorities, date back to those years. Cosimo commissioned Vasari to build the Uffizi, which was still under construction when the footbridge was built, in order to bring all of the city's magistracies under one roof and thus to reorganise the state's administration under his absolute control. So the building started out life as a bureaucratic structure – "Uffizi" means "Offices" – but Cosimo's son Francesco I partially remodelled it in 1581 and turned the upper floor into a gallery, thus paving the way for the monumental fabric's gradual transformation into the celebrated museum that now houses a majority of the masterpieces from the Medici collections.

The footbridge over Via della Ninna, which was used as a private passageway under the House of Lorraine and then sealed in the 19<sup>th</sup> century when the two palaces came under different ownership, has hitherto been open to the public only on special occasions and guided tours.

Thanks to this combined ticket, it is finally possible to visitors to visit both museums under their own steam, the only constraint being dictated by security and capacity requirements, which is why visitors have to book a specific time slot for their footbridge crossing and show up at the start of the bridge, in the Green Room in Palazzo Vecchio, at the appointed time.

---

## Information

Firenze Musei, tel. (+39) 055 294883 (Mon-Fri 8.30-18.30; Sat 8.30-12.30)

[www.uffizi.it](http://www.uffizi.it)

[museicivici Fiorentini.comune.fi.it](http://museicivici Fiorentini.comune.fi.it)

## Reservations

- > Firenze Musei hotline: tel. (+39) 055 294883 (Mon-Fri 8.30-18.30; Sat 8.30-12.30)
- > On line at [www.uffizi.it](http://www.uffizi.it)

Advance ticket sales:

- > ticket booth in Orsanmichele, Via Calzaiuoli (Mon-Sat, 9-17)
- > ticket booth no. 2 in the Uffizi, Piazzale degli Uffizi (Tue-Sun, 8.15 - 18)

## Advance ticket collection point

Ticket booth no. 3 in the Uffizi, Piazzale degli Uffizi (Via Lambertesca side) (Tue-Sun, 8.15-18)

## Dates and Times

**Tuesday to Sunday (except Thursday afternoon)**

Tour starts in Palazzo Vecchio	9.30 - 10.15 - 11.00 - 11.45 - 12.30 - 13.15 - 14.00
Footbridge crossing time	<b>10.30 - 11.15 - 12.00 - 12.45 - 13.30 - 14.15 - 15.00</b>

Tour starts in Palazzo Vecchio	14.45 - 15.30 - 16.15
Footbridge crossing time	<b>15.45 - 16.30 - 17.15</b>

**Tuesdays** (until 26 September 2017) extended access, to tie in with the Uffizi's late opening day, is available at the following times:

Tour starts in Palazzo Vecchio	17.00 - 18.15 - 19.00
Footbridge crossing time	<b>18.00 - 19.15 - 20.00</b>

**Palazzo Vecchio cloakroom closes**

5 July – 30 September	23.00
1 October – 14 January	19.00

**Thursdays**

Tour starts in Palazzo Vecchio	9.30 - 10.15 - 11.00
Footbridge crossing time	<b>10.30 - 11.15 - 12.00</b>

**Palazzo Vecchio cloakroom closes** 14.00

**Closed: every first Sunday of the month, 25 December, 1 January and on special occasions**

The combined ticket allows the holder to visit the Museo di Palazzo Vecchio (except for the Roman Theatre excavation, the Wallwalk and the Tower) and the Galleria delle Statue e delle Pitture degli Uffizi (including temporary exhibitions).

**The tour starts in Palazzo Vecchio with direct access to the first floor of the museum in the Salone dei Cinquecento.**

**Before starting their tour, combined ticketholders must leave all rucksacks, backpacks, suitcases and umbrellas at the cloakroom on the ground floor of the Museo di Palazzo Vecchio. After visiting the Uffizi, visitors must return to collect their property no later than the cloakroom's closing time shown above.**

The time given for the start of the tour is indicative and is not binding. Visitors should note, however, that the Museo di Palazzo Vecchio takes roughly an hour to visit.

**The time specified for crossing the footbridge linking the Museo di Palazzo Vecchio and the Galleria delle Statue e delle Pitture degli Uffizi is binding and mandatory. Visitors must go to the start of the bridge, in the Green Room in the Apartments of Eleonora on the second floor of the Museo di Palazzo Vecchio, at the time shown on their reservation for the crossing. Failure to show up at the specified time entails loss of the right to cross the footbridge.**

Palazzo Vecchio opening time	h. 9.00 am
Uffizi closing time	h. 6.50 pm

(Tuesdays, until 26 September, h.10 pm)

## **Admission**

5 to 30 July 2017

- Full price € 27.00
- Concessions \* € 18.50

31 July to 7 January 2018

- Full price € 26.50
- Concessions \* € 18.25

8 January to 14 January 2018

- Full price € 22.00
- Concessions \* € 16.00

\* visitors aged 18 to 25 from countries in the European Union, or other countries where reciprocal conditions apply

**- Admission free (reservations required: € 4.00):**

- > visitors under the age of 18 (children under 12 must be accompanied by an adult)
- > European Union tour guides and interpreters
- > members of ICOM, ICOMOS and ICCROM
- > European Union school groups with their teachers (up to a set number)
- > academic staff and students with Fine Arts Academies or corresponding EU institutes; with the Faculty of Architecture, or studying Cultural Heritage Conservation and the Educational Sciences, or pursuing the Archaeology or Art History pathway in a degree course in the Humanities and Philosophy, or pursuing a degree or equivalent course in any European Union member country
- > schoolteachers
- > disabled visitors and one carer
- > journalists



Accessible